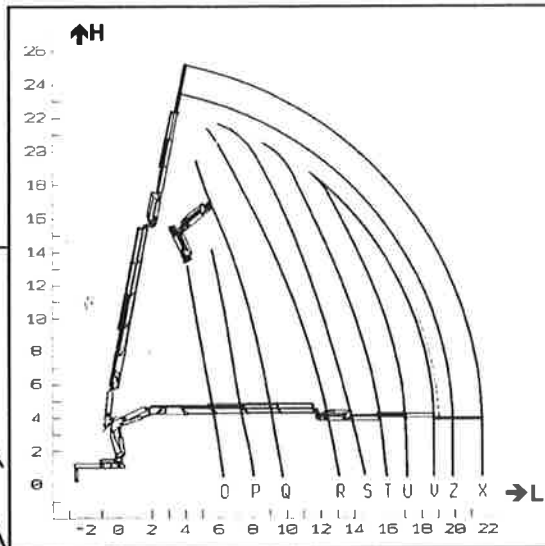
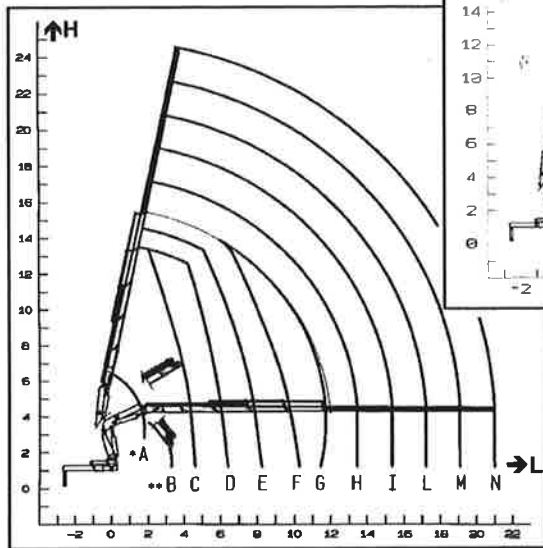


32024 + J63



32024

		A	B	C	D	E	F	G	H	I	L	M	N	O	P	Q	R	S	T	U	V	Z	X	Y
t	↙	15,25	8,50	6,50	4,65	3,50	2,80	2,20	1,65	1,35	0,95	0,72	0,57	3,60	3,00	2,35	1,60	1,30	1,15	0,90	0,70	0,50	0,40	
	↘	-	-	-	-	-	-	-	-	-	-	-	-	-	-	-	-	-	-	-	-	-	-	-
m	→L	1,85	3,10	4,40	6,00	7,80	9,70	11,60	13,45	15,35	17,20	19,10	21,00	5,95	7,50	9,90	12,10	14,05	15,55	17,10	18,65	20,35	22,10	
	↑H	6,40	3,90	13,45	13,45	14,50	15,50	15,50	17,10	19,00	20,75	22,65	24,50	13,35	14,15	19,40	21,35	21,75	21,75	21,75	21,75	22,80	24,50	
		A	B	C	D	E	F	G	H	I	L	M	N	O	P	Q	R	S	T	U	V	Z	X	Y
ft	↙	33620	18740	14330	10250	7720	6170	4850	3640	2980	2090	1590	1260	7940	6610	5180	3530	2870	2530	1980	1540	1100	880	
	↘	-	-	-	-	-	-	-	-	-	-	-	-	-	-	-	-	-	-	-	-	-	-	-
lbs	→L	6'1"	10'2"	14'5"	19'8"	25'7"	31'10"	38'1"	44'2"	50'4"	56'3"	62'8"	68'11"	196"	247"	326"	398"	461"	51"	56'1"	61'2"	66'9"	72'6"	
	↑H	21'	12'10"	44'2"	44'2"	47'7"	50'10"	50'10"	56'1"	62'4"	68'1"	74'4"	80'5"	43'10"	46'5"	63'7"	70'1"	71'4"	71'4"	71'4"	71'4"	74'10"	80'5"	

* PORTATA MAX NOMINALE AL GANCIO FISSO
MAX CAPACITY AT FIXED HOOK

** PORTATA MAX AL GANCIO MOBILE
MAX CAPACITY AT MOBILE HOOK

*** PORTATA MASSIMA PASSANTE PER L'ORIZZONTALE
MAX CAPACITY FROM HORIZONTAL TO VERTICAL

NB: LE PRESTAZIONI INDICATE SI OTTENGONO CON BRACCIO PRINCIPALE A 25°

NOTE: THE STATED PERFORMANCES CAN BE OBTAINED WITH 25° INCLINATED MAIN BOOM.